



The Ranch Board of Directors Meeting

May 17, 2021

General Plan Elements

Required Elements:

- Land Use
- Mobility
- Housing
- **Open Space**
- Conservation
- Safety
- Noise

Additional Elements:

- Downtown
- **Parks and Recreation**



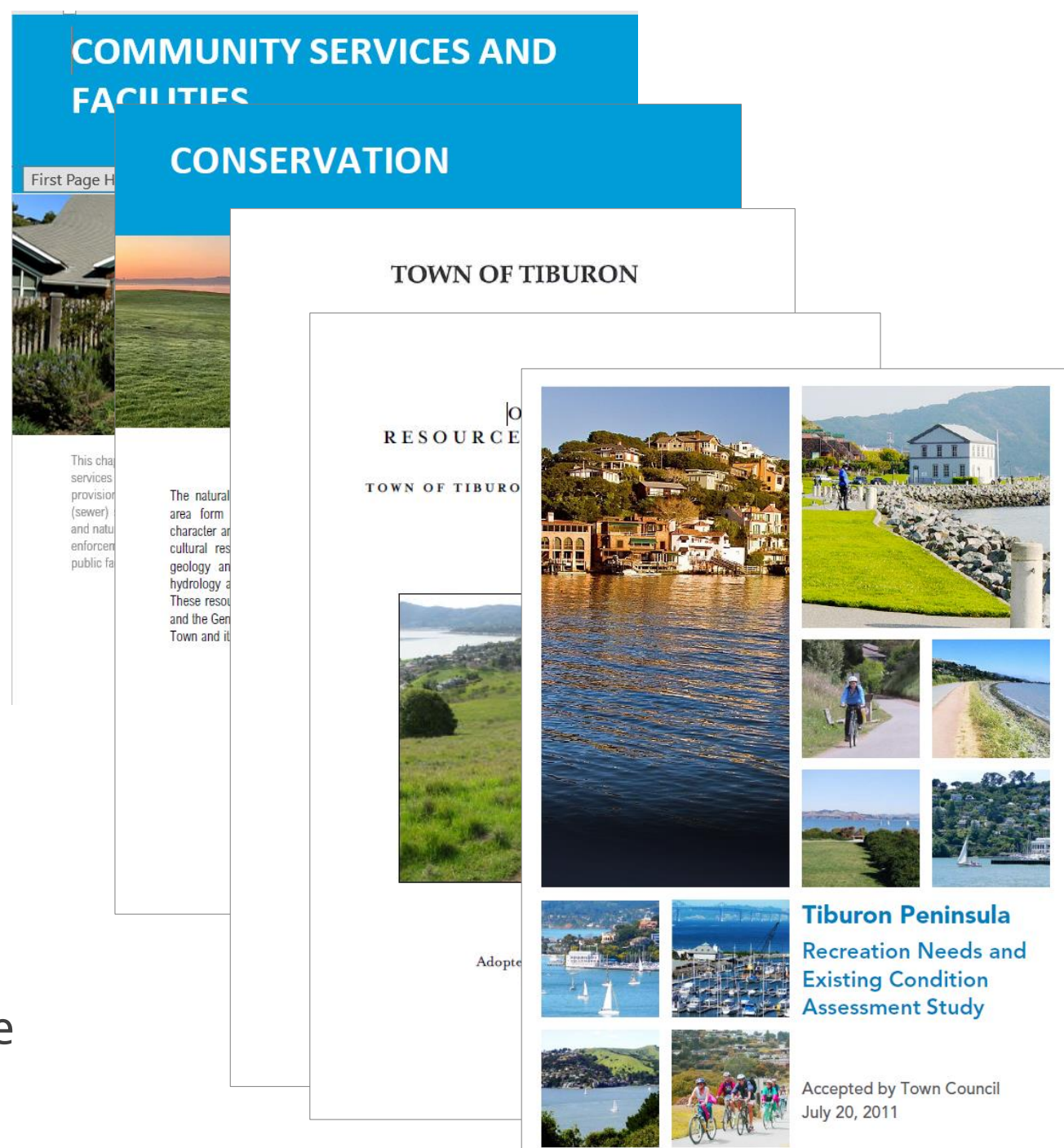
General Plan 2040

- Articulates a community's vision for the future
- Update to the 2005 Plan
- Will plan for next 20 years
- Contains goals, policies, and implementing programs
- Approvals of new development projects, public projects, and capital improvements require findings of consistency with the General Plan



Background Material

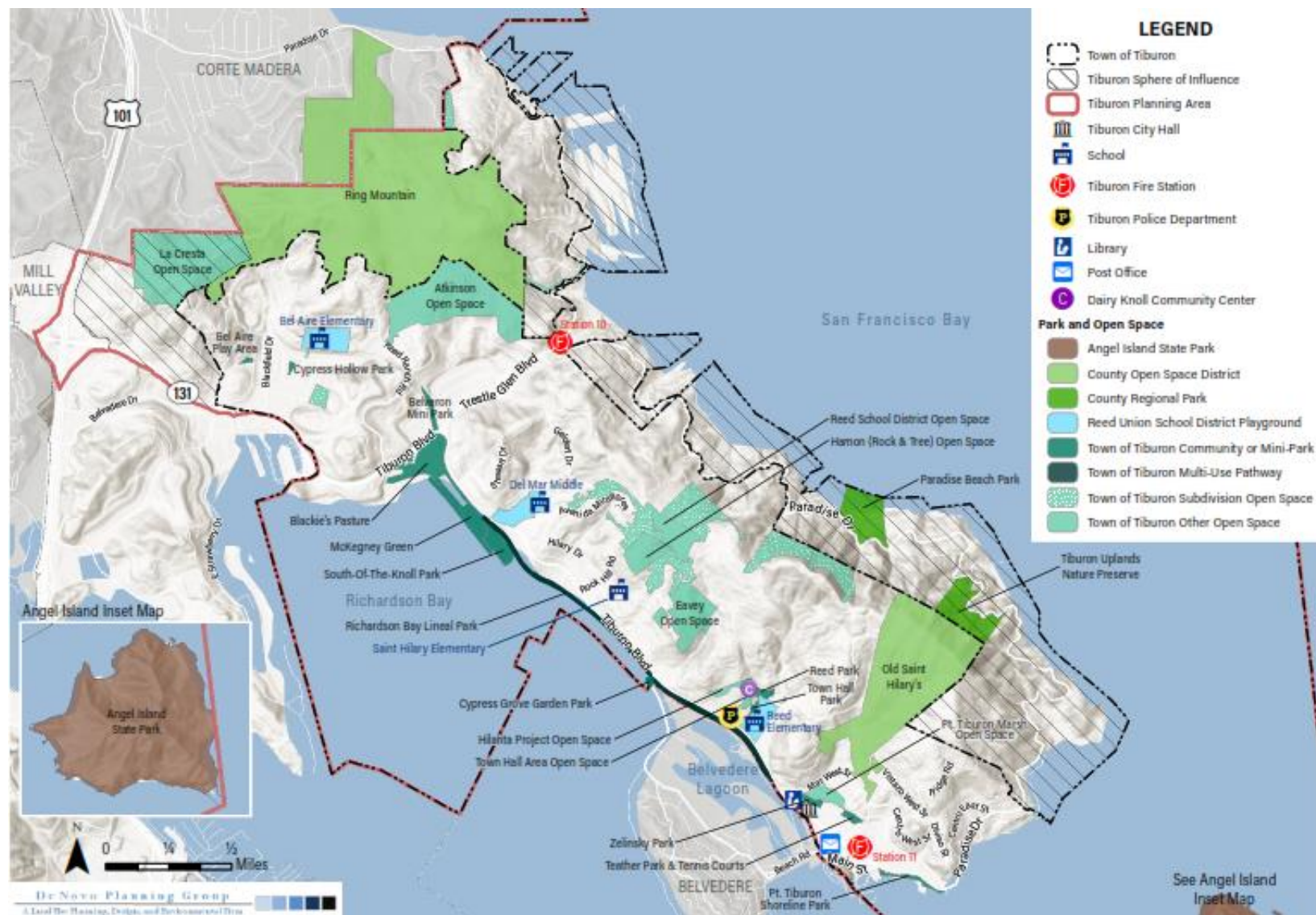
- Existing Conditions Reports
 - Parks & Open Space
 - Conservation
- 2005 General Plan
- Open Space Management Plan (2010)
- Tiburon Peninsula Recreation Needs Assessment (2011)
- Bay Trail Gap Study (2012)
- Bike & Pedestrian Master Plan (2016)
- Meetings with stakeholders and focus groups
- Results from Setting Priorities survey
- Background material is available on the website at CreateTiburon2040.org



Parks and Open Space

Blessed with open space...

- Public Parks – 57 acres
 - Shoreline Park
 - Blackie’s Pasture, Old Rail Trail
 - Neighborhood Parks (Cypress Hollow, Bel Aire Play Area, Belveron, Zelinsky)
 - South of Knoll Playground
 - McKegney Green
 - Tennis Courts at Teather Park
- Regional Parks – 37 acres
 - Paradise Beach
 - Tiburon Uplands Preserve
- Public Open Space – 770 acres
 - Ring Mountain Preserve
 - Middle Ridge
 - Old St. Hilary’s Preserve
- Angel Island State Park – 726 acres



See Angel Island Inset Map

Parks and Open Space

- Current parkland/population ratio:
94 acres (Tiburon and County regional parks)/9,540 residents =
5.9 acres/1,000 population
- Quimby Act park In-lieu fee for new development set at current 5.0 acres/1,000 goal
- Presently no park in-lieu funds available for new acquisitions or park improvements



Recreation Programs

- Belvedere-Tiburon Joint Recreation Committee established in 1975 to administer and operate recreation programs for Bel/Tib residents
- The Ranch provides over 500 classes & activities/year with over 4,800 participants
- The Ranch funding is largely fee-based for classes and programs



2011 Recreation Needs Assessment

- Residents are mostly satisfied with the availability of recreation facilities.
- 90% of residents were satisfied with the availability of recreation programs, classes and events.
- Gap analysis indicated no obviously underserved categories. Ratings of “teen programs” were lower, approaching a level to recommend increases.
- 48% of residents rated highly the need for a community center. Challenges with cost and available site.



Community Engagement



Home

Workshops

Surveys

Documents

Resources

Contact



Virtual community workshop, March 30

- Presentation and polling
- Breakout room discussions
- Reporting back
- Estimated 24 participants

Online survey

- Open March 31 – April 26, linked from CreateTiburon2040.org
- 123 responses

Workshop Feedback

Are there specific park or trail improvements that should be priorities?

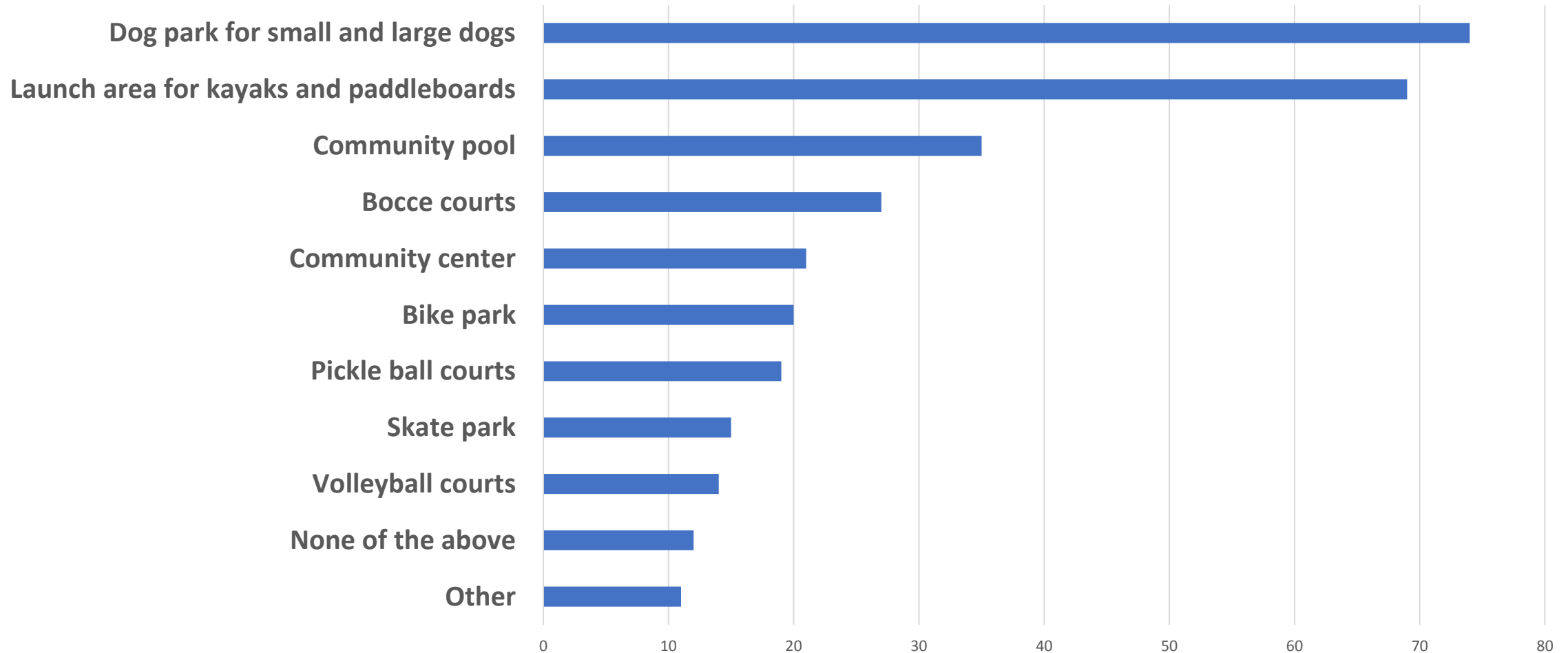
- Suggested dog park at Eavey Open Space.
- More multi-use trails (including mountain bikes)
- Community pool
- Kayak launch

Is there sufficient access to recreational facilities and programs? Are there specific age groups or type of residents that have insufficient access?

- Need facilities and programs for teens and pre-teens.

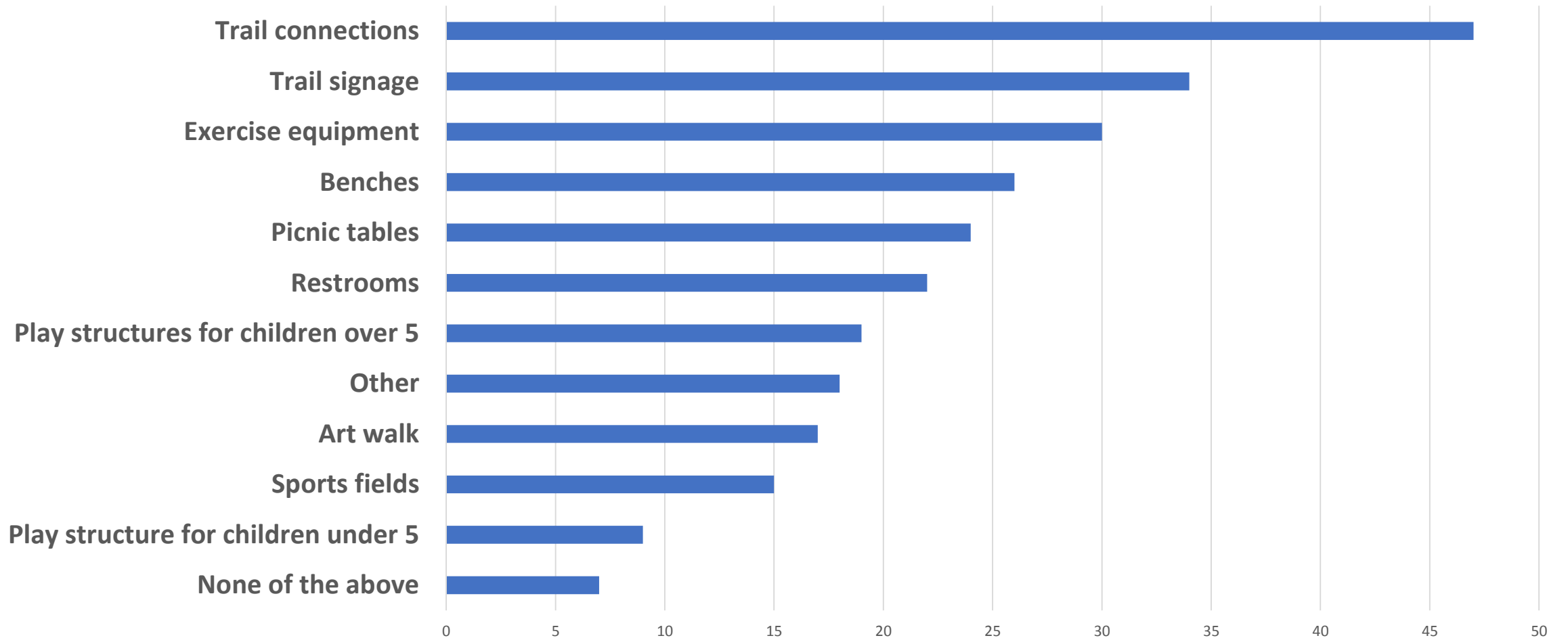
Survey Feedback

What kind of additional recreation facilities should the Town provide?
(select your top 3)



Survey Feedback

What parks and trail improvements are needed?
(select your top 3)



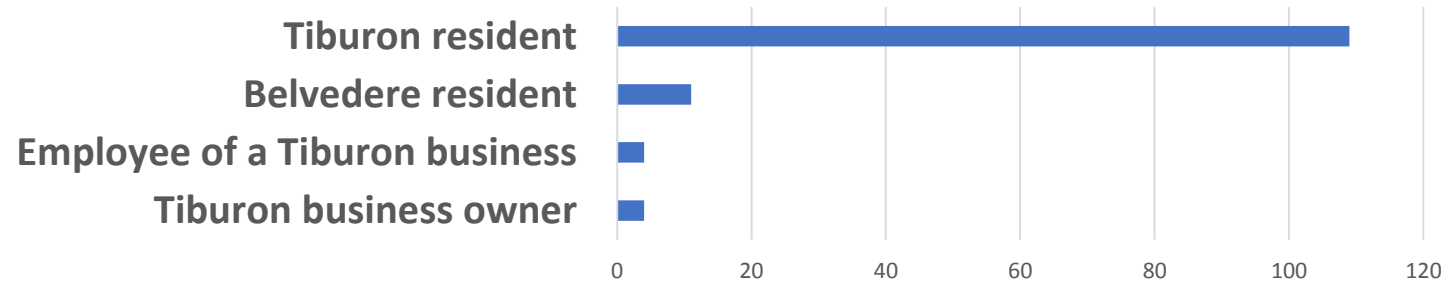
Survey Feedback

Other suggestions:

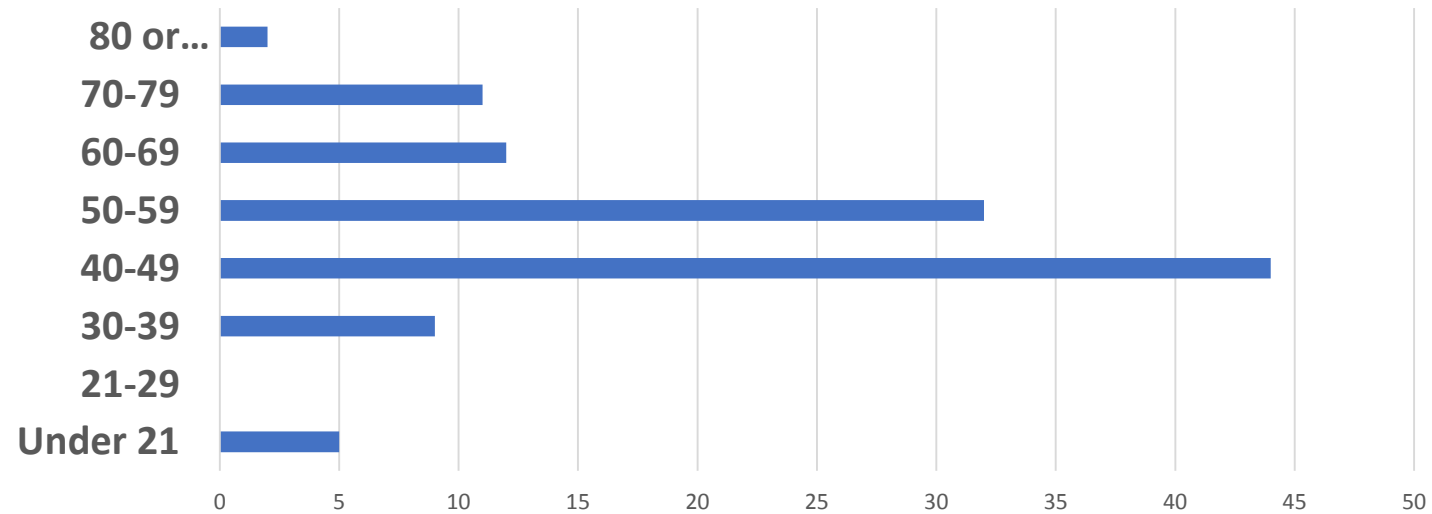
- Shade structures at playgrounds
- Water bottle filling stations
- More trash and recycling cans
- Chess tables
- Teen facilities and programming
- Public dinghy dock in Downtown
- Rental paddleboard storage facility at Blackie's Beach

Survey Feedback

I am a:

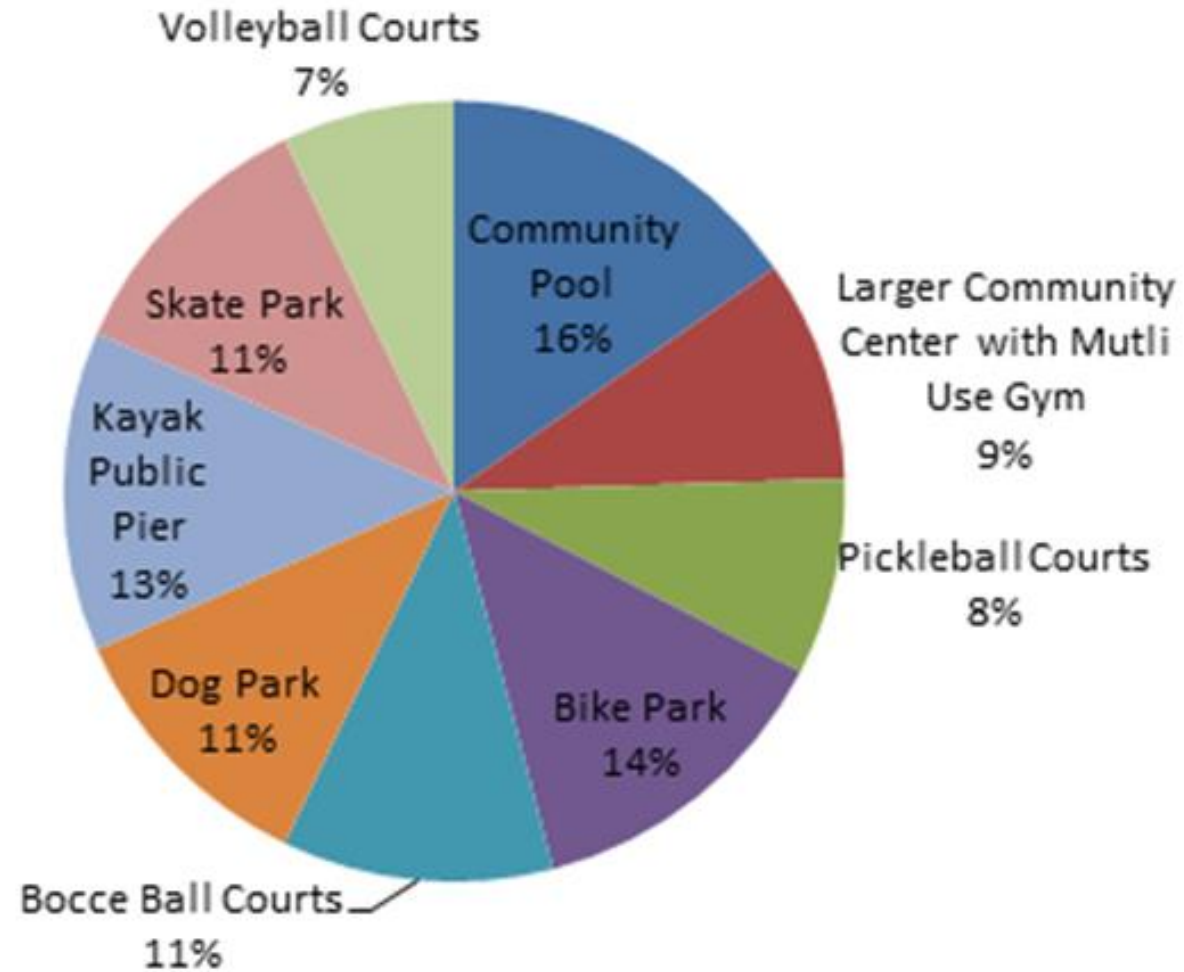


Your age group:



Youth Survey Feedback (20 K-8 kids)

What would you like to see in Tiburon?



How does the General Plan address Parks & Recreation?

Policies:

- Maintain park land and recreational facilities.
- Require new development to dedicate park land or pay in-lieu fees.
- Pursue funding to maintain, improve and acquire existing and future park facilities.
- Retain Blackie's Pasture for passive, informal recreational use.
- Encourage additional public shoreline access from publicly accessible land.
- Increase and enhance network of public trails.
- Work with the Belvedere/Tiburon Joint Recreation Committee to provide affordable, needs of the entire community

Programs:

- Work with City of Belvedere to consider recreational programming and facilities needs. (*Assessment, 2011*)
- Explore need and desirability for a community center.

Discussion of Parks and Recreation Priorities



Parks & Recreation Needs

- What would you like to see out of recreation in the next 20 years?
- What new or expanded/updated park or recreation facilities will be needed?
- What new recreation programs will be needed?
- Do Tiburon residents with disabilities, lower incomes, or the aged have sufficient access to park facilities and recreation programs?

CREATE
TIBURON
2040

